

# How are Different Imaging Technologies Used to diagnose different types of injuries?

## MRI

(Magnetic Resonance Imaging)

**MRI** is a medical imaging technique that uses magnets and radio waves to create images of the body.

### What to Expect

You lie on a table that slides in the MRI machine, which is deeper and narrower than a CT Scanner. The MRI Magnets create loud tapping or thumping noises.

### Duration

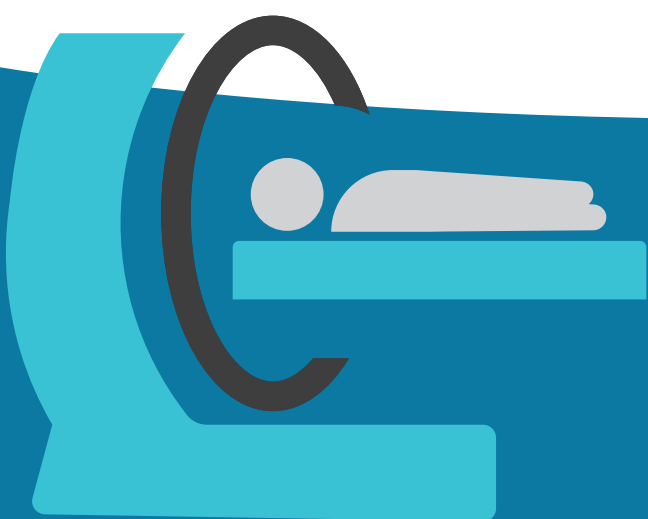
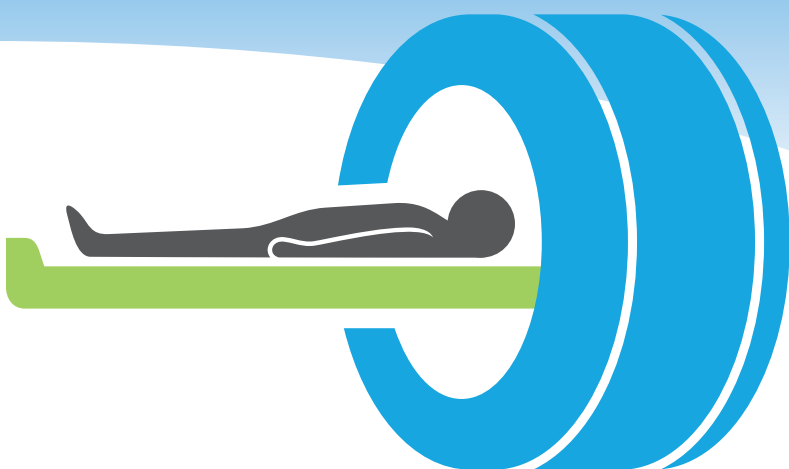
45 Minutes - 1 hour

### Imaging Method

Magnetic Waves

### Used to Diagnose

- Joint or Tendon Injuries
- Joint Inflammation
- Nerve Compression
- Spinal Injuries
- Torn or Detached Ligaments, Muscles and Cartilage



## CT Scan

(Computed Tomography Scan)

**CT Scans** use a series of x-rays to create cross sections of the inside of the body, including bones, blood vessels, and soft tissues.

### What to Expect

You will lie on a table that slides into the scanner, which looks like a large doughnut. The x-ray tube rotates around you to take images.

### Duration

10 - 15 Minutes

### Imaging Method

Ionizing Radiation

### Used to Diagnose

- Injuries from Trauma
- Bone Fractures, including subtle fractures not visible on x-ray
- Organ Injuries
- Infections

## X-Rays

**X-rays** are quick, painless test that produce images of the structures inside your body, especially bones.

### What to Expect

You lie, sit, or stand while the x-ray machine takes images. You may be asked to move into several positions.

### Duration

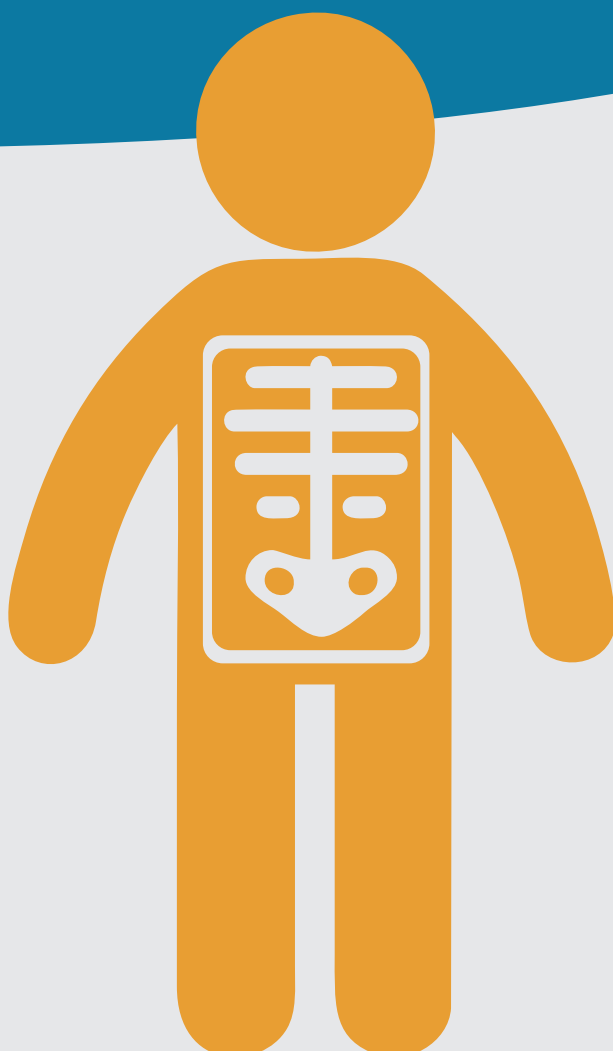
10 - 15 Minutes

### Imaging Method

Ionizing Radiation

### Used to Diagnose

- Bone Fractures and Breaks
- Joints
- Tooth Injuries
- Infections



800-553-2155  
mtiamerica.com